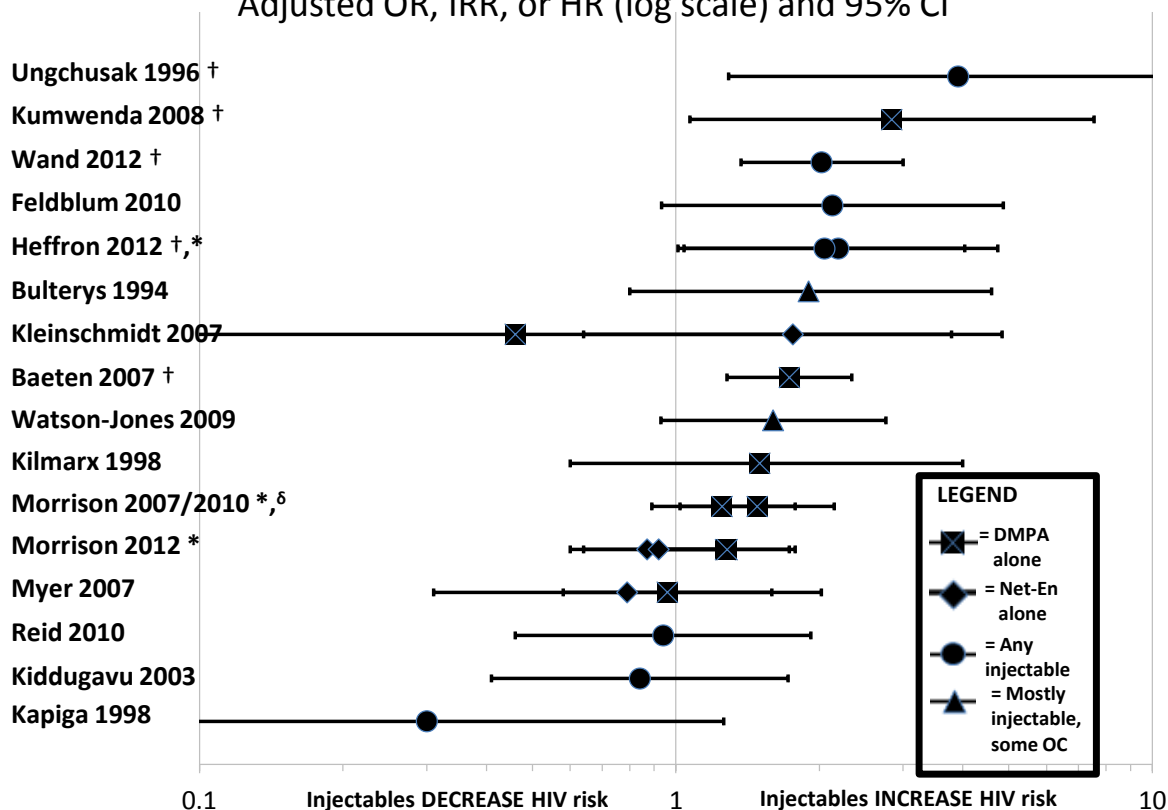


Figure 3.

Prospective, observational studies of injectables & HIV acquisition, regardless of study quality

Adjusted OR, IRR, or HR (log scale) and 95% CI



\* study included both Cox and MSM estimates

† study reported statistically significant findings

<sup>δ</sup> study reported statistically significant findings under one statistical approach, but non-significant findings under another statistical approach

Abbreviations: OR=odds ratio, IRR=incidence risk ratio; HR=hazard ratio, DMPA=Depot medroxyprogesterone acetate; Net-En= norethisterone enanthate; OC=oral contraception

Note: see Figure 5 for injectable estimates among studies that met minimum quality criteria